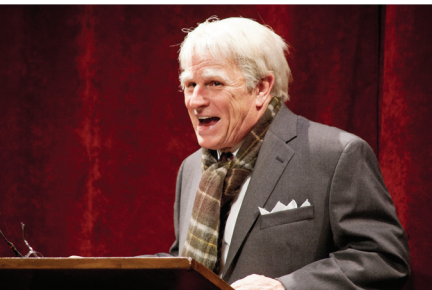


# SILVER CENTER



# arts & events

at PLYMOUTH STATE UNIVERSITY

# 2016-17

## SEPTEMBER

- 2 ■ Community Photo Club Exhibit
- 6 ■ PSU Faculty Art Exhibit:  
Roots and Growth
- 9 ■ Silver Series: Bill Charlap Trio
- 11 ■ Faculty Flute Recital:  
Aubrie Dionne
- 12 ■ Sidore Lecture Series:  
Aviva Chomsky
- 15 ■ Eagle Pond Authors' Series:  
Liz Ahl
- 18 ■ Trio Veritas: *Amerigo*
- 22-25 ■ PSU Theatre: *Brilliant Being*

## OCTOBER

- 1 ■ Silver Series:  
IDI presents ICE/DANCE
- 3 ■ Sidore Lecture Series: Colin Kelly
- 5 ■ Eagle Pond Authors' Series:  
Mark Doty
- 13-16 ■ PSU Musical Theatre:  
*Carrie the Musical*
- 19 ■ Ogunquit Art Association: New Work  
& Resilience An Interdisciplinary  
Exploration
- 21 ■ Silver Series: *This Verse Business*
- 24 ■ PSU Symphonic Band:  
*Lord of the Rings*
- 26 ■ Finding Place on Paper:  
Contemporary Poets and Printmakers  
Explore the White Mountains
- 30 ■ Graff & Morin Piano Duo

## NOVEMBER

- 3 ■ All New England Choral Festival
- 7 ■ Sidore Lecture Series:  
Nadine Strossen
- 15 ■ PSU Jazz Ensemble & Combo
- 17-20 ■ PSU Theatre: *Stage Kiss*
- 21 ■ All New England Band Festival
- 27 ■ Silver Series:  
Pianist Frederic Chiu
- 30 ■ PSU Chamber Players

## DECEMBER

- 2 ■ PSU Theatre:  
Rehearsed Reading Series
- 2-3 ■ PSU Contemporary  
Dance Ensemble
- 4 ■ PSU Choirs: *A Joyful Noise!*
- 7 ■ PSU Percussion Ensemble
- 11 ■ Pemigewasset Choral Society  
Holiday Concert

## JANUARY

- 20-22 ■ Educational Theatre
- & 25-28 Collaborative: *Fiddler on the Roof*

### KEY:

- Silver Series Guest Artist
- Eagle Pond Authors' Series
- Saul O Sidore Series
- Performances by PSU students and faculty
- Art Exhibitions Openings
- Community groups and collaborations

## FEBRUARY

- 1 ■ Forecasting Climate Change  
and Water Impact
- 2 ■ An Evening of Intimate Jazz
- 3 ■ Silver Series:  
Apple Hill String Quartet
- 4 ■ PSU Dance Premiere Gala
- 8 ■ Jason Swift: The Tools You Need
- 10-11 ■ PSU Theatre: *Master Class*
- 12 ■ Exploring Environment
- 16 ■ Eagle Pond Authors' Series:  
Meg Kearney
- 21 ■ Silver Series:  
Olga Vocal Ensemble

## MARCH

- 4 ■ Contemporary Piano Festival
- 5 ■ Silver Series:  
Cashore Marionettes
- 7 ■ Sidore Lecture Series:  
Carolyn Fluherh-Lobban  
and Richard Lobban
- 8-12 ■ PSU, UNH, and KSC Theatre  
A Greek Trilogy
- 12 ■ NHAEA: Reflections on Water
- 15 ■ PSU Symphonic Band
- 28 ■ All New England Jazz Festival
- 28 ■ PSU Juried Student Exhibit
- 31 ■ PSU Theatre:  
Rehearsed Reading Series

## APRIL

- 6-9 ■ PSU Musical Theatre: *Cowboys!*
- 13 ■ Silver Series:  
Late Night with Leonard Bernstein
- 17 ■ Sidore Lecture Series:  
Deborah Anker
- 20 ■ Eagle Pond Authors' Series:  
Wesley McNair
- 22-23 ■ PSU Choirs:  
*Ragtime the Musical* in concert
- 23 ■ Piano Master Class
- 26 ■ BFA in Graphic and Studio Art
- 27-29 ■ PSU Playwright's Lab
- 30 ■ PSU Symphonic Band

## MAY

- 3 ■ PSU Percussion Ensemble
- 3 ■ Summer Camps: The White Mountain  
Roots of an Iconic American Experience
- 4 ■ PSU Jazz Ensemble & Combo
- 10 ■ PSU Chamber Players
- 12-13 ■ PSU Contemporary  
Dance Ensemble
- 14 ■ Pemigewasset Choral Society

The Silver Series of guest artists is made possible in part by our friends and alumni through the Jeannette and Richard Collins Award, the PSU Annual Fund, the Dick and Betty Hanaway Endowment for the Performing Arts, the PSU Student Senate, and our business partners:

All events are subject to change without notice. Be sure to leave contact information when ordering tickets so we may contact you with any unavoidable changes or cancellations.

FOR TICKETS CALL (603) 535-ARTS (2787) TOLL FREE AT 1-800-779-3869  
ONLINE AT SILVER.PLYMOUTH.EDU

### COVER IMAGES FOR EVENTS:

IDI presents ICE/DANCE, Apple Hill String Quartet  
This Verse Business, and Olga Vocal Ensemble



Design by: Mackenzie Fullerton 2017 Printing by: RAM Printing, Inc.

COVER, CALENDAR, AND BACK PAINTING  
PSU FACULTY ART EXHIBIT Annette Mitchell

# calendar 2016-17



**HANAWAY THEATRE**  
**\$35-30 ADULT**  
**\$33-28 SENIOR**  
**\$20-15 YOUTH**

# bill charlap trio

## BILL CHARLAP TRIO

As one of the world's premier jazz pianists, Bill Charlap has performed and recorded with many leading artists of our time, ranging from jazz masters Phil Woods and Wynton Marsalis to singers Barbra Streisand and Tony Bennett (with whom he won a Grammy last year for their recording *The Silver Lining: The Songs of Jerome Kern*). Since 1997, he has led the Bill Charlap Trio with bassist Peter Washington and drummer Kenny Washington, now recognized as one of the leading groups in jazz today. The long-awaited new recording *The Bill Charlap Trio: Notes from New York* features the trio in peak performance and was recorded immediately following a two-week run at Jazz at Lincoln Center.

**September 9, 2016 at 7 p.m.**

## ICE DANCE INTERNATIONAL PRESENTS ICE/DANCE

Ice Dance International (IDI) is the ice ballet company for the twenty-first century. Overflowing with energy, technique, and exuberant choreography, Ice Dance International is building a bridge to develop figure skating as an internationally recognized art form. Embracing the worlds of both ballet and ice dance with a cast of 10 skaters of world renown, this company is filled with dynamic movement, artistry, and joy. The evening will include work by IDI founders and choreographers: America's most famous male ballet dancer of all time, Edward Villella and IDI Artistic Director Douglas Webster. This performance is included in the premiere tour of Ice Dance International's exciting and engaging repertory. Come celebrate the movement that is making ice skating more art than sport!

Please note this special presentation is being held at the Hanaway Rink at the PSU Ice Arena, which is located across the bridge from the Silver Center.

# ice dance international

**HANAWAY RINK**  
**\$40-35 ADULT**  
**\$38-33 SENIOR**  
**\$25-20 YOUTH**

**October 1, 2016 at 7 p.m.**



## THIS VERSE BUSINESS

Perhaps the most widely read American poet of the twentieth century, Robert Frost returns to the stage in A.M. Dolan's *This Verse Business*. Frost is played by the Emmy award-winning actor and New Hampshire native Gordon Clapp. Clapp is perhaps best known for his role as Detective Greg Medavoy on *NYPD Blue* and for his Tony-nominated role in the acclaimed Broadway production of *Glengarry Glen Ross*. For 50 years, Robert Frost traveled the country giving talks and performing his poems. Partly based on these public appearances, *This Verse Business* not only gives us Frost, the rascally wit of the platform, but also Frost at home, the private man alluding to his family and speaking about his relationship with art. Frost taught at PSU (then Plymouth Normal School) in 1911 and a statue of him can be found in the middle of campus.

# this verse business

HANAWAY THEATRE

\$35-30 ADULT

\$33-28 SENIOR

\$20-15 YOUTH

October 21, 2016 at 7 p.m.



SMITH RECITAL HALL

\$35 ADULT

\$33 SENIOR

\$20 YOUTH

# frederic chiu

PIANIST FREDERIC CHIU

Frederic Chiu's intriguing style springs from a diverse set of experiences and interests: his Asian/American European background, his musical training, and an early and ongoing exploration of artificial intelligence and human psychology, especially the body-mind-heart connection. With more than 20 CDs on the market, some have been singled out as "Record of the Year" by *Stereo Review*, "Top 10 Recordings" by the *New Yorker*, with raves from the *Wall Street Journal* and the *New York Times*. He was the recipient of the Avery Fisher Career Grant, the Petscheck Award of the Juilliard School, and was a fellow of the American Pianist Association. Chiu's program will include selections by Bach, Debussy, and Prokofiev.

"Excellent pianist ... intelligent, eloquent performance." *The New York Times*

November 27, 2016 at 3 p.m.



SMITH RECITAL HALL

\$35 ADULT

\$33 SENIOR

\$20 YOUTH

# apple hill string quartet

## APPLE HILL STRING QUARTET

Since its founding in 2007, the Apple Hill String Quartet has earned praise around the world for its concerts presenting interpretive mastery of traditional repertoire as well as for world premieres and commissioned pieces. Called “first rate” by the *Boston Globe*, violinist Elise Kuder is a graduate of the Oberlin Conservatory and the Juilliard School. As a member of the Kammerorchester Basel in Switzerland, violinist Colleen Jennings toured extensively throughout Western Europe. Mike Kelley, viola, graduated from the Walnut Hill School for the Arts and has received degrees from Oberlin Conservatory and the Juilliard School, where he has also taught. Cellist Rupert Thompson made his solo debut with the Baltimore Symphony Orchestra at the age of 18 and received the C.D. Jackson Memorial Award of Merit from Tanglewood.

February 3, 2017 at 7 p.m.

## OLGA VOCAL ENSEMBLE

Olga is a young a cappella singing group that approaches old traditions in a fresh way, combining enthusiasm, humor, and drama with genuine vocal clarity to enrapture both young and old. Their repertoire covers more than five centuries of musical joy, and the ensemble is already known for their unique programs, in which moving classical music comes together with popular repertoire. They can sing a Medieval Icelandic drinking song and follow it with a Top 40 hit. The ensemble, which includes Dutch, Icelandic, and Russian members, was founded in 2012 at the Utrecht Conservatory in the Netherlands while the members of the group were students.

# olga vocal ensemble

SMITH RECITAL HALL

\$35 ADULT

\$33 SENIOR

\$20 YOUTH



February 21, 2017 at 7 p.m.

## CASHORE MARIONETTES

Unmatched in artistry, grace, and refinement of movement, the internationally acclaimed Cashore Marionettes redefine the art of puppetry. The moving and humorous performance has astounded audiences in Europe, the Far East, and across North America. In the performance *Life in Motion*, Joseph Cashore presents his collection of marionette masterworks. Characters of depth, integrity, and humanity are portrayed unlike anything else in theatre today. The performance is a series of scenes taken from everyday life and set to beautiful music by composers such as Beethoven, Vivaldi, Strauss, and Copland. Through a combination of virtuoso manipulation, humor, pathos, classic music, and poetic insight, the Cashore Marionettes take the audience on a journey that celebrates the richness of life. *Life in Motion* is a powerful, entertaining, surprising, theatrically satisfying, one-of-a-kind performance for adults and young adults.

# cashore

SMITH RECITAL HALL

\$35 ADULT

\$33 SENIOR

\$20 YOUTH

March 5, 2017 at 3 p.m.

HANAWAY THEATRE

\$35-30 ADULT

\$33-28 SENIOR

\$20-15 YOUTH

# late night with leonard bernstein

## LATE NIGHT WITH LEONARD BERNSTEIN

“He was a night owl,” Jamie Bernstein says of her famous father. “He could never shut his motor off, and so, so much of his most creative times happened in the middle of the night.” This proclivity lies at the heart of *Late Night with Leonard Bernstein*, an intimate portrait that aims to recreate the moments of inspiration, humor, beauty, and experimentation that friends and family came to expect from the legendary musician, conductor, and composer during those magical predawn hours. Jamie Bernstein hosts this affectionate and informal cabaret that invites audiences into her father’s famous late-night soirees at the Dakota with film clips and personal memories. *Late Night* is a glimpse of the maestro at home—silly and gregarious, and both an eternal teacher and student of music. Acclaimed soprano Amy Burton and pianists John Musto and Michael Boriskin perform Bernstein’s favorite music as well as his own. Bernstein is best known as the longtime conductor of the New York Philharmonic, music director for the New York Symphony Orchestra, and as composer of such popular scores as *West Side Story*, *Candide*, and *On the Town*.

April 13, 2017 at 7 p.m.



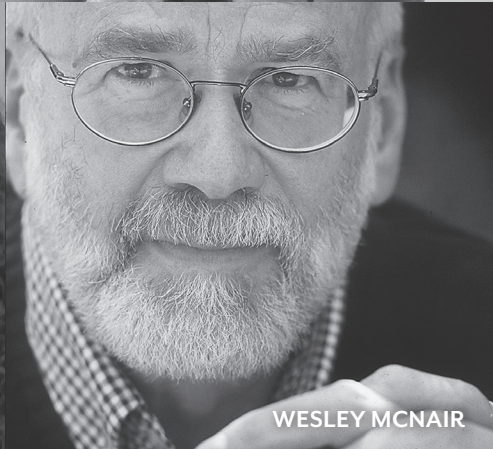
LIZ AHL



MARK DOTY



MEG KEARNEY



WESLEY MCNAIR

# the eagle pond authors' series



For the past 19 years, the Eagle Pond Authors' Series has celebrated great writing by some of the nation's outstanding authors. This free series is a tribute to beloved poet and author Donald Hall, who is the heart and soul of this series and instrumental in bringing nationally and internationally revered poets to the PSU campus.

Generous support from the Follett Higher Education Group at the PSU Bookstore helps keep this series free and open to the public. A book signing and reception follow each reading. Free tickets are available in advance to ensure admission.



## Liz Ahl

September 15 at 7 p.m.

Liz Ahl is the author of the poetry chapbooks *Talking About the Weather*, *Luck*, and *A Thirst That's Partly Mine*, winner of the 2008 Slapering Hol Press chapbook contest. Her latest chapbook, *Home Economics*, will be published in the summer of 2016.

## Mark Doty

October 5 at 7 p.m.

Mark Doty is the author of several collections of poetry, including *Fire to Fire: New and Selected Poems*, which received the 2008 National Book Award. He serves as a chancellor of the Academy of American Poets and is this year's recipient of the Donald Hall-Jane Kenyon Prize in American Poetry.

## Meg Kearney

February 16 at 7 p.m.

Meg Kearney is author of *Home By Now*, winner of the PEN New England Award for Poetry; *An Unkindness of Ravens*; three young-adult novels-in-verse and the critically acclaimed picture book, *Trouper*, illustrated by E.B. Lewis.

## Wesley McNair

April 20 at 7 p.m.

Wesley McNair is the poet laureate of Maine and the author of twenty books including ten volumes of poetry. His most recent poetry collections are *The Lost Child: Ozark Poems* and *Lovers of the Lost: New and Selected Poems*.

# psu department of music, theatre, and dance

## FACULTY FLUTE RECITAL

**September 11 at 3 p.m.**

Repertoire will include a beautiful Handel trio and a romping sonata by Martinu, concluding with a virtuosic showpiece by Doppler. These trios will feature Aubrie Dionne, flute: Ms. Dionne is an active performer, teacher, conductor, and adjudicator in New England. She is on faculty at the Manchester Community Music School and Plymouth State University. Mark Latham, violin: Mr. Latham has been active as a violinist, teacher, composer, and conductor; Elizabeth Blood, piano: Ms. Blood currently serves as a resident artist/staff accompanist at UNH and is on the faculty of the Manchester Community Music School.

SMITH RECITAL HALL FREE

## TRIO VERITAS: AMERIGO

**September 18 at 1 p.m.**

The performance of *Amerigo* is part of a 50-state commission with one violinist in each state premiering *Amerigo*, a sonata for violin and piano by Stephanie Ann Boyd. This is Part I of a two-year project dedicated to the life and work of John Kendall, the man who brought the Suzuki method to the U.S. in the 1960s. Dan Perkins, piano, will be joined by violinist Viktoria Tchertchian and cellist Harel Gietheim. The program will also include works by Felix Mendelssohn and Oliver Caplan.

SMITH RECITAL HALL

\$15 ADULT / \$14 SENIOR / \$12 YOUTH



## BRILLIANT BEING

**September 22–24 at 7 p.m.**

**and September 24 & 25 at 1 p.m.**

A world premiere of a collaborative piece conceived by PSU faculty members Matt Kizer, Paul Mrocзка, Jonathan Santore, and Amanda

Whitworth. Featuring performances by Amanda Whitworth and Emily Jaworski, *Brilliant Being* is a journey towards a new light. This innovative form of performance layers new types of dance and technology with originally composed music to create a live Escher-like fantasyscape. This is where live performance meets video gaming in an interactive performance piece, redefining theatre and storytelling. *Brilliant Being* is about creating anew after everything is lost.

STUDIO THEATRE

\$18 ADULT / \$14 SENIOR & YOUTH

SPECIAL SATURDAY MATINÉE PRICE: \$13 ALL SEATS



PSU THEATRE SYLVIA



## CARRIE THE MUSICAL

**October 13–15 at 7 p.m.**

**and October 15 & 16 at 1 p.m.**

*Carrie the Musical*, adapted from the Stephen King novel, is the story of an awkward teenage girl with special powers who is struggling for acceptance. Her lonely life is dominated by an oppressive mother and the unforgiving and judgmental attitudes of her classmates. Carrie finally has hope when one girl befriends her but just when everything seems perfect, a horrible prank unleashes Carrie's telekinetic powers on her high school classmates and teachers. *Carrie* has a book by Lawrence D. Cohen, lyrics by Dean Pitchford, and music by Michael Gore.

HANAWAY THEATRE

\$18 ADULT / \$14 SENIOR & YOUTH

SPECIAL SATURDAY MATINÉE

\$13 ALL SEATS

## PSU SYMPHONIC BAND:

### LORD OF THE RINGS

**October 24 at 7 p.m.**

The Plymouth State University Symphonic Band, under the direction of Mark Stickney, will be performing Johan Deij's *Lord of the Rings Symphony*. They will be joined on stage by the Plymouth State University Percussion Ensemble under the direction of Tim Gilmore.

HANAWAY THEATRE

\$8 ADULT & YOUTH / \$6 SENIOR

## GRAFF AND MORIN PIANO DUO

**October 30 at 4 p.m.**

Carleen Graff and Jacqueline Morin will present a recital of four-hand piano music from a variety of style periods.

SMITH RECITAL HALL

\$10 ALL SEATS

## ALL NEW ENGLAND CHORAL FESTIVAL: FIVE DAYS THAT CHANGED THE WORLD

**November 3 at 7 p.m.**

PSU director of choral activities Dan Perkins conducts the 39th annual festival featuring the PSU choirs and over 200 high-school singers from 60 schools from throughout New England. Guest choir: Goffstown High School, Joshua Desrochers, director.

HANAWAY THEATRE

\$15–\$14 ADULT / \$14–\$13 SENIOR

\$12–\$11 YOUTH

## PSU JAZZ ENSEMBLE AND COMBO

**November 15 at 7 p.m.**

The PSU student Jazz Combo and Jazz Ensemble perform a variety of jazz from classic to modern. The ensembles are under the direction of Tim Gilmore and Chris Klaxton.

HANAWAY THEATRE

\$6 ADULT / \$4 SENIOR AND YOUTH



## STAGE KISS

**November 17–19 at 7 p.m.**

**and November 19–20 at 1 p.m.**

In this charming comedy by Sarah Ruhl, art imitates life and life imitates art. When two actors with a history are thrown together as romantic leads in a forgotten 1930s melodrama, they quickly lose touch with reality as the story onstage follows them offstage. In this comedy the drama and laughs are both onstage and off.

STUDIO THEATRE

\$18 ADULT / \$14 SENIOR & YOUTH

SPECIAL SATURDAY MATINÉE

\$13 ALL SEATS



PSU THEATRE A MAN OF NO IMPORTANCE

## ALL NEW ENGLAND BAND FESTIVAL

**November 21 at 7 p.m.**

This annual festival features the PSU Symphonic Band and 200 high school musicians. The concert concludes a day-long event involving honor band members representing 65 high schools from all six New England states. The students were chosen from more than 400 who applied from a total of 80 high schools. More than two-thirds of those selected have been members of their respective all-state bands or orchestras. Composers Johan De Meij and Travis Weller will serve as guest conductors.

HANAWAY THEATRE

\$10 ADULT / \$6 SENIOR / \$8 YOUTH



## PSU CHAMBER PLAYERS

**November 30 at 7 p.m.**

Student chamber ensembles in performance will include: piano ensemble, flute choir, saxophone quartet, clarinet choir, woodwind quintet, and brass ensembles.

SMITH RECITAL HALL FREE

## REHEARSED READING SERIES: NEW PLAYS FROM PSU

**December 2 at 6 p.m.**

An evening of rehearsed readings of plays in development by PSU Dramatic Writing students and faculty in the Playwright's Lab. Free and open to the public, this is a time to hear new work and discuss it in an open forum. Plays will be performed by the Playwright's Lab Acting Company. Plays are to be determined and will be chosen about two weeks before the event.

SMITH RECITAL HALL FREE

## CONTEMPORARY DANCE ENSEMBLE

**December 2 & 3 at 7 p.m.**

PSU's dance performance group showcases original works by faculty and students in various dance genres.

HANAWAY THEATRE  
\$10 ADULT / \$8 SENIOR,  
YOUTH & GROUP RATE

## PSU CHOIRS: A JOYFUL NOISE!

**December 4 at 1 p.m.**

Dan Perkins, director of choral activities, and Plymouth State University's Chorale and Chamber Singers make a joyful noise for the holiday season.

HANAWAY THEATRE  
\$20-\$18 ADULT / \$17-\$14 SENIOR  
\$13-\$11 YOUTH

## PSU PERCUSSION ENSEMBLE

**December 7 at 7 p.m.**

The PSU Percussion Ensemble features an eclectic blend of music including original student arrangements. It's always a full house so get your tickets early.

STUDIO THEATRE  
\$5 ADULT / \$3 SENIOR & YOUTH

## PEMIGEWASSET CHORAL SOCIETY HOPE IS BORN

**December 11 at 3 p.m.**

The Pemigewasset Choral Society invites you to join them for music that celebrates all of the hopes of the season and the coming year.

HANAWAY THEATRE  
\$12 ADULT / \$7 SENIOR,  
YOUTH AND GROUP RATE

## AN INTIMATE EVENING OF JAZZ

**February 2 at 7 p.m.**

Acoustic jazz duo Rik Pfenninger on woodwinds and David Lockwood on piano will perform an evening of intimate jazz standards from the 40s to present day. Come out of the cold weather and warm up your February with tunes from Miles Davis, Dave Brubeck, Duke Ellington, Grover Washington Jr., and many more.

SMITH RECITAL HALL FREE



## DANCE PREMIERE GALA

**February 4 at 8 p.m.**

Inspiring dance performance showcasing adjudicated works by dancers across New England. Includes special appearances by professional guest artists. Formal attire suggested but not required.

HANAWAY THEATRE  
\$20 ADULT / \$15 SENIOR,  
YOUTH & GROUP RATE

## MASTER CLASS

**February 10 & 11 at 7 p.m.**

A staged reading of Terence McNally's play *Master Class*, featuring PSU faculty members Eva Nagorka as Maria Callas and Dan Perkins as Accompanist, and PSU guest artists as First Soprano, Tenor, and Second Soprano. This is the mesmerizing story of the fascinating and emotionally wrought diva Maria Callas. Playwright McNally wrote the book for last season's *A Man of No Importance*.

SMITH RECITAL HALL \$11 ALL SEATS

MASTER CLASS  
BY TERENCE McNALLY



## CONTEMPORARY PIANO FESTIVAL

**March 4**

At 11 a.m. there will be a lecture/performance by Dr. Carleen Graff featuring the piano works of a contemporary composer open to the public. Later, at 3:15 p.m. there will be an open recital of competition winners and PSU piano students. In addition to the lecture/performance and the recital, the entire day is designed for students, teachers, and the general public to experience contemporary piano music. There will be a competition with 7th-12 grade students as well as a lecture on a chosen topic of interest to young students. A master class with Dr. Graff will feature four young pianists.

SMITH RECITAL HALL FREE

## OEDIPUS THE KING

**March 2 at 10 a.m., March 10-11 at 7 p.m. and March 11 & 12 at 1 p.m.**

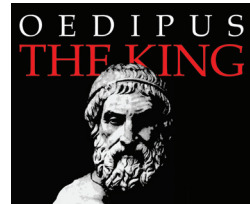
*Oedipus the King* by Sophocles is the story of a man who rose to the greatest of heights, only to see a mistake result in his downfall. Oedipus, the ultimate politician, problem-solver, and hero, falls from grace when his tragic error is revealed in what is still, after 2,500 years, a stunning piece of theatre.

HANAWAY THEATRE \$18 ADULT / \$14 SENIOR & YOUTH  
SPECIAL SATURDAY MATINÉE PRICE: \$13 ALL SEATS  
SPECIAL SCHOOL PERFORMANCE ON MARCH 2 AT 10 A.M.:  
\$7 FOR STUDENTS / \$12 ALL OTHERS

**March 8 & 9 at 7 p.m.**

PSU's *Oedipus the King* is part of the Greek Project, produced in conjunction with UNH and Keene State. Keene will perform *Antigone* at PSU on March 8 at 7 p.m. and UNH will perform *Oedipus at Colonus* at PSU on March 9 at 7 p.m..

SPECIAL PRICE FOR ALL THREE PLAYS: \$23



## PSU SYMPHONIC BAND WITH THE KRYOS BRASS QUINTET

**March 15 at 7:30 p.m.**

The Plymouth State University Symphonic Band, under the direction of Dr. Mark Stickney, will be joined by the Kryos Brass Quintet from Pennsylvania for a performance of Eric Ewazen's *Shadowcatcher*, a symphony written for brass quintet accompanied by wind ensemble.

HANAWAY THEATRE \$10 ADULT / \$6 SENIOR / \$8 YOUTH

## ALL NEW ENGLAND JAZZ FESTIVAL

**March 28 at 6 p.m.**

Select high students from all six New England states will be rehearsing all day on campus and performing a concert with the Plymouth State University Jazz Ensembles, directed by Tim Gilmore and Chris Klaxton.

HANAWAY THEATRE \$10 ADULT / \$6 SENIOR / \$7 YOUTH

## REHEARSED READING SERIES: NEW PLAYS FROM PSU

**March 31 at 6 p.m.**

An evening of rehearsed readings of plays in development by PSU dramatic writing students and faculty in the Playwright's Lab. Free and open to the public, this is a time to hear new work and discuss it in an open forum. Plays will be performed by the Playwright's Lab Acting Company. Plays are to be determined and will be chosen about two weeks before the event.

SMITH RECITAL HALL FREE

## COWBOYS! A MUSICAL VAUDEVILLE AND MEDICINE SHOW

**April 6-8 at 7 p.m. and April 8-9 at 1 p.m.**

*Cowboys!* is a rambunctious musical comedy set in the old west of Wyoming in the 1880's. Love, betrayal, family secrets, crooked politics, and cross-dressing are at the heart of this retelling of the singing cowboy movies of Roy Rogers, Gene Autry, and the Sons of the Pioneers. *Cowboys!* was created by John Briggs, Paul Mroccka, and Judith Townsend.

STUDIO THEATRE \$18 ADULT / \$14 SENIOR & YOUTH  
SPECIAL SATURDAY MATINÉE PRICE: \$13 ALL SEATS



### PSU CHOIRS: RAGTIME THE MUSICAL IN CONCERT

April 22 at 7 p.m. and April 23 at 4 p.m.

The PSU choirs present a concert version of the award-winning musical *Ragtime*. The stories of an upper-class wife, a determined Jewish immigrant, and a daring young Harlem musician unfold in turn-of-the-century New York—all three united by their desire and belief in a brighter tomorrow. Terrence McNally's book tells their compelling stories, which are set to the Tony Award®-winning score by Stephen Flaherty and Lynn Ahrens. Dan Perkins conducts the PSU choirs with guest orchestra.

HANAWAY THEATRE

\$20–\$18 ADULT / \$19–\$17 SENIOR  
\$15–\$13 YOUTH

### PIANO MASTER CLASS

April 23 at 1 p.m.

The public is invited to observe this piano master class with Diane Birr and PSU students. Dr. Birr is professor of piano at Ithaca College where she teaches collaborative piano, private piano, and class piano. She is coordinator for the graduate degree in collaborative piano and is an active collaborative pianist through the US, Canada, Australia, and Europe.

SMITH RECITAL HALL FREE

### PLAYWRIGHT'S LAB: NEW PLAYS FROM PSU

April 27–28 at 7 p.m. & April 29 at 1 p.m.

Enjoy staged readings of new plays by PSU Dramatic Writing students and faculty developed in a yearlong workshop. Featuring the Playwright's Lab Acting Company, these performances offer audiences the essence of these new plays, which are being given voice in a public performance for the first time.

SMITH RECITAL HALL \$5 ALL SEATS

### PSU SYMPHONIC BAND

April 30 at 3 p.m.

The Plymouth State University Symphonic Band will be presenting a concert of traditional and contemporary music. The ensemble has premiered new works and regularly performs with international soloists.

HANAWAY THEATRE

\$8 ADULT & YOUTH / \$6 SENIOR



### PSU PERCUSSION ENSEMBLE

May 3 at 7 p.m.

The PSU Percussion Ensemble features an eclectic blend of music including original student arrangements. It's always a full house so get your tickets early.

STUDIO THEATRE

\$5 ADULT / \$3 SENIOR & YOUTH

### PSU JAZZ ENSEMBLE AND COMBO

May 4 at 7 p.m.

The PSU student Jazz Combo and Jazz Ensemble perform a variety of jazz from classic to modern. The ensembles are under the direction of Tim Gilmore and Chris Klaxton.

HANAWAY THEATRE

\$6 ADULT / \$4 SENIOR & YOUTH

### PSU CHAMBER PLAYERS

May 10 at 7 p.m.

Student chamber ensembles include: piano ensemble, flute choir, saxophone quartet, clarinet choir, the woodwind quintet, and brass ensembles.

SMITH RECITAL HALL FREE

### CONTEMPORARY DANCE ENSEMBLE

May 12–13 at 7 p.m.

PSU's dance performance group showcases original works by faculty and students in various dance genres. Premiere of new work set on PSU dancers by Katherine Hooper, artistic director of BoSoma Dance Company from Boston.

HANAWAY THEATRE

\$10 ADULT / \$8 SENIOR,  
YOUTH & GROUP RATE

### PEMIGEWASSET CHORAL SOCIETY: THE FAURE REQUIEM

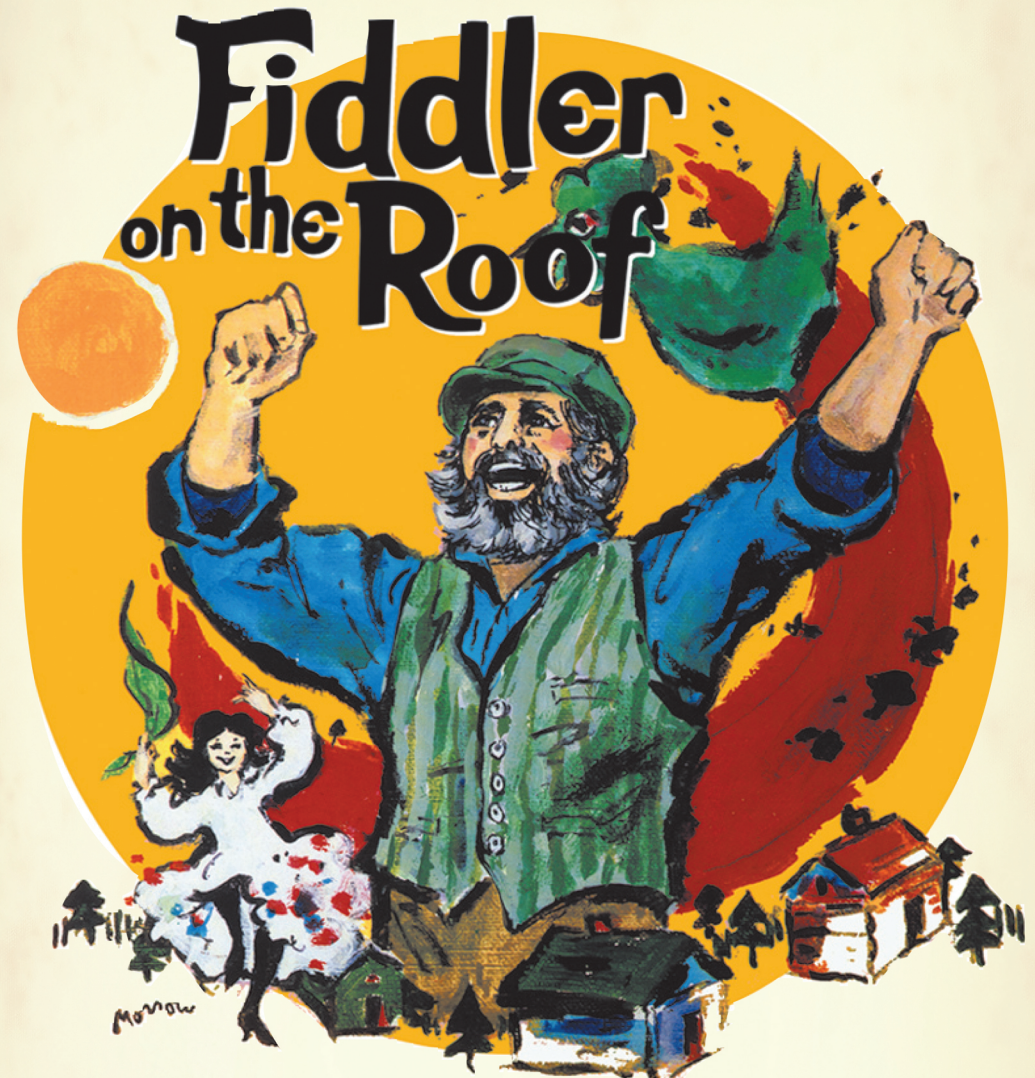
May 14 at 3 p.m.

The traditional spring concert by the Pemigewasset Choral Society will feature the well-known requiem by Faure as well as a variety of favorite choral music.

HANAWAY THEATRE

\$12 ADULT / \$7 SENIOR,  
YOUTH AND GROUP RATE

The Educational Theatre Collaborative  
proudly presents



Based on Sholem Aleichem stories by special permission of Arnold Perl  
Book by Joseph Stein • Music by Jerry Bock • Lyrics by Sheldon Harnick  
Produced on the New York Stage by Harold Prince • Original New York Stage Production Directed and Choreographed by Jerome Robbins

January 20, 21, and 25-28 at 7 p.m.  
January 21, 22, and 28 at 2 p.m.

Hanaway Theatre • Silver Center • Plymouth State University

Tickets: (603) 535-ARTS and [silver.plymouth.edu](http://silver.plymouth.edu)

Starring Bruce Goldman as Tevye and Melody Funk as Golde.  
All other roles open by auditions in November, 2016 at the Silver Center.  
Visit [plymouth.edu/etc](http://plymouth.edu/etc) for additional information.

Children's Arts Festival, January 7, Silver Center, (603) 535-2647  
Integrated Arts Conference, January 20, Silver Center, (603) 535-2933

Plymouth State  
UNIVERSITY



FIDDLER ON THE ROOF is presented through special arrangement with Music Theatre International (MTI).  
All Authorized Performance Materials are also supplied by MTI. [www.MTIShows.com](http://www.MTIShows.com)



# saul sidore lecture series

## MIGRANTS, REFUGEES, AND DISPLACED PERSONS: RESETTLING THE UNSETTLED

The world today is witnessing the largest movement of human populations since the end of WWII. This year, Sidore speakers will explore various dimensions of population movements both between and within countries. As people come to know more about this controversial issue, nation-states and their citizens will be in a better position to respond.

### SEPTEMBER 12, 2016 UNDOCUMENTED: HOW IMMIGRATION BECAME ILLEGAL

*Aviva Chomsky, Professor of History and Coordinator of Latin American, Latino, and Caribbean Studies at Salem State University*  
Chomsky will explore how “illegality” and “undocumentedness” are concepts that were created to exclude and exploit.

### OCTOBER 3, 2016 CLIMATE AS A DRIVER OF HUMAN MIGRATION: ASSESSING RESILIENCE AND VULNERABILITY

*Colin Kelly, Associate Research Scientist at Columbia University’s International Research Institute for Climate and Society and a senior research fellow with the Center for Climate and Security*  
Poor governance and resource management, along with growing populations, have a combined and often disastrous effect on resource availability, especially water.

All Sidore lectures take place in the **Smith Recital Hall at 7 p.m.** and are free and open to the public. Advance reservations for tickets are encouraged and can be made by calling the Silver Center box office at (603) 535-ARTS (2787). The conversation continues with a reception and refreshments following each lecture. For more information visit: [plymouth.edu/sidore](http://plymouth.edu/sidore).

### NOVEMBER 7, 2016 IMMIGRATION RIGHTS AND WRONGS

*Nadine Strossen, Professor at New York Law School and former President of the American Civil Liberties Union*  
The US is proud of its heritage as a “nation of immigrants,” but we also have a long tradition of excluding and discriminating against various immigrant groups.

### MARCH 7, 2017 THE EXPERT WITNESS IN ASYLUM CASES

*Carolyn Fluerh-Lobban, Professor Emerita of Anthropology at Rhode Island College, and Richard Lobban, Professor Emeritus at Rhode Island College and currently teaches African Studies at the Naval War College*  
Both professors will speak about cases in which they have been called as expert witnesses for those desperately seeking asylum.

### APRIL 17, 2017 REFUGEES AT OUR BACKDOOR: THE FLIGHT OF CENTRAL AMERICAN REFUGEES TO THE US

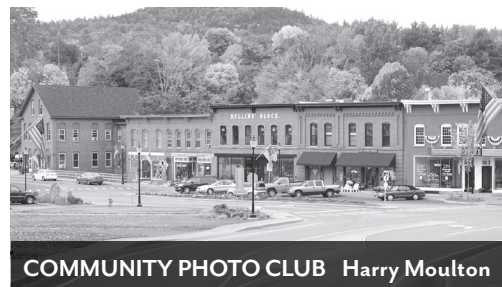
*Deborah Anker, Clinical Professor of Law and Director of the Harvard Law School Immigration and Refugee Clinical Program*  
What is the efficacy, legality, and morality of our nation’s response to this refugee migration of large numbers of children, women, and even unaccompanied children?

## exhibitions in silver center

THE FOLLOWING EXHIBITIONS ARE  
FREE AND OPEN TO THE PUBLIC

### THE COMMUNITY PHOTO CLUB: NEW HAMPSHIRE ARCHITECTURE IN BLACK AND WHITE

**September 2–September 30, 2016**  
Opening Reception Friday, Sept. 2, 5-7 p.m.  
This themed photography exhibit is organized and presented in partnership with the Community Photo Club, a fellowship of area photographers at all levels of development meeting with the express intent of improving their skills and broadening their understanding of the art of taking pictures. Along with the theme-based photographs, there will be individual displays by each photographer.



COMMUNITY PHOTO CLUB Harry Moulton

### OGUNQUIT ART ASSOCIATION: NEW WORK

**October 17–December 5, 2016**  
Opening Reception  
Wednesday, Oct. 19, 4-6 p.m.  
The oldest artist group in Maine! Founded in 1928, The Ogunquit Art Association has played a central part in the vibrant cultural life of the southern Maine/New Hampshire seacoast for over ninety years. Founded to bring together professional artists to exhibit their work to the public and to provide an educational forum, the OAA affords artists the opportunity to display their finest work.



OGUNQUIT ART ASSOCIATION Jayne Adams

### EXPLORING ENVIRONMENT: A REGIONAL HIGH SCHOOL JURIED ART EXHIBIT

**February 2–26, 2017**  
Opening reception: Sunday Feb 12, 2-4 p.m.,  
Awards ceremony 2:30  
KDAG Workshop for students  
and teachers at 12:30-2

For this exhibit, the Arts Alliance of Northern New Hampshire partners with KDAG (Karl Drerup Art Gallery) to welcome high school student artwork featuring the diverse ways in which students engage with – and reflect on – the natural world. The exhibit, workshop and reception will invite these students and their art teachers to connect with PSU Art Department faculty and students and with the Arts Alliance’s Arts & Environment programming.  
(Snow date: Sunday, February 19)

### NH ART EDUCATORS’ ASSOCIATION’S YOUTH ART MONTH: REFLECTIONS ON WATER

**March 6– April 1, 2017**  
Opening Reception, Sunday, Mar. 26, 1-3 p.m.  
Professional Development workshop for Art Teachers, Tour of PSU Art Department for students/families. Presented in collaboration with the New Hampshire Art Educators’ Association, which has provided networking and support for art educators from every level of instruction for over 25 years. For this year’s WATER themed exhibit, art teachers from over 30 schools select from their students’ work, creating a visual presentation that not only displays the imagination and skill of the students, but also the guidance and creativity of the teachers. A wonderful snapshot of learning through the arts!

### BFA IN STUDIO ART/ BFA IN GRAPHIC DESIGN EXHIBITIONS

**April 24–May 12, 2017**  
In KDAG and Silver Center  
Opening Reception, Wednesday, Apr. 26,  
with Welcome Remarks 4:30 p.m.  
The BFA Exhibition celebrates students graduating from PSU’s intense, highly focused professional programs. Throughout the year, studio art majors delve into personal themes, motifs, and media to achieve a mature body of work, culminating in a comprehensive exhibit, while graphic design majors work to create and define a fictitious company and to spend the year producing a broad range of applications including logos, stationary, advertisement, posters, pamphlets, and publications.

# exhibitions in karl drerup art gallery

THE FOLLOWING EXHIBITIONS ARE  
FREE AND OPEN TO THE PUBLIC

## PSU ART FACULTY EXHIBIT: ROOTS AND GROWTH

**September 6–October 7, 2016**

Opening Reception Tuesday, Sept. 6, 4–6 p.m.,  
with Welcome Remarks 4:30 p.m.

This exhibit will give insight into how PSU Art  
Faculty artists evolve and sustain their practices,  
which include ongoing processes of invention  
and response.



RESILIENCE Jason Mitcham

## RESILIENCE: AN INTERDISCIPLINARY EXPLORATION FEATURING JASON MITCHAM AND PSU STUDENTS

**October 17–December 9, 2016**

Opening Reception Wednesday, Oct. 19, 4–6 pm  
with Welcome Remarks 4:30 pm

What does it mean for a landscape or  
community to be resilient? What about a  
person? How does the look of resilience change  
across space, time, and culture? How are we  
vulnerable to change?

This exhibition will evolve over the exhibit time  
period, featuring visual art, written texts, and  
interactive components made by PSU students  
working across disciplines to build a rich  
conversation in real time, as well as paintings  
and video works by visiting artist Jason Mitcham.

## KARL DRERUP ART GALLERY

150 Main St., Draper & Maynard Building, Plymouth, NH  
Visit [plymouth.edu/gallery/](http://plymouth.edu/gallery/) for more events and information  
(603) 535-2416 [kdag.art@plymouth.edu](mailto:kdag.art@plymouth.edu)



PSU ART FACULTY EXHIBIT Penny Huynen

## THE TOOLS YOU NEED: RECENT WORK BY JASON SWIFT

**February 6–March 4, 2017**

Opening Reception Wednesday, Feb 8, 4–6 p.m.,  
with Welcome Remarks 4:30 p.m.

This exhibit will feature work by Jason Swift,  
made during his recent sabbatical. He explores  
the “layers of meaning” conveyed through the  
relationship between personal experiences,  
materials, objects, and art making processes.

## PSU JURIED STUDENT EXHIBIT

**March 27–April 13, 2017**

Opening Reception, Tuesday, Mar. 28, 4–6 pm,  
with Welcome and Awards Ceremony 4:30 pm

Highlighting the strength, energy, passion, and  
technical skill of our PSU art students, this  
annual exhibition features the best efforts of  
students from all levels of art making. Visiting  
jurors select excellent works from each level of  
instruction including an independent level that  
encourages and nurtures independent, self-  
directed creativity.

## BFA IN STUDIO ART/ BFA IN GRAPHIC DESIGN EXHIBITIONS

**April 24–May 12, 2017**

In KDAG and Silver Center

Opening Reception, Wednesday, Apr. 26,  
with Welcome Remarks 4:30 pm

Gallery Talk by student artists,  
Tuesday May 2 (time TBD)

The BFA Exhibition celebrates students  
graduating from PSU’s intense, highly focused  
professional programs. Throughout the year,  
studio art majors delve into personal themes,  
motifs, and media to achieve a mature body of  
work, culminating in a comprehensive exhibit,  
while graphic design majors work to create and  
define a fictitious company and to spend the  
year producing a broad range of applications  
including logos, stationary, advertisement,  
posters, pamphlets, and publications.

# museum of the white mountains

THE FOLLOWING EXHIBITIONS ARE  
FREE AND OPEN TO THE PUBLIC



TAKING THE LEAD

## TAKING THE LEAD: WOMEN AND THE WHITE MOUNTAINS

**April 6–October 7, 2016**

Co-Curated by Marcia Schmidt Blaine  
and Cynthia Robinson

What role have the White Mountains played  
in the lives of women connected with and  
influenced by them over the past 200  
years? *Taking the Lead: Women and The  
White Mountains* explores the role the White  
Mountains have made in forming female  
leaders.

## FINDING PLACE ON PAPER: CONTEMPORARY POETS AND PRINTMAKERS EXPLORE THE WHITE MOUNTAINS

**October 24–December 16, 2016**

Opening Reception,  
Wednesday, October 26, 5–7pm

Co-Curated by Liz Ahl, Parker Potter,  
and Cynthia Robinson

How does the White Mountain region inspire  
visual and written expressions? *Finding Place  
on Paper* will pair work from contemporary  
professional New England regional poets  
and printmakers with PSU student work,  
providing an interdisciplinary exploration of  
the White Mountains as a place.

## MUSEUM OF THE WHITE MOUNTAINS

34 Highland Street, Plymouth NH  
Visit [plymouth.edu/museum-of-the-white-mountains/](http://plymouth.edu/museum-of-the-white-mountains/) for more events and information  
(603) 535-3210 [museum.wm@plymouth.edu](mailto:museum.wm@plymouth.edu)



FORECASTING Fawn Atencio

## FORECASTING: CLIMATE CHANGE AND WATER IMPACT

**January 23–April 21, 2017**

Opening Reception,  
Wednesday, February 1, 5–7pm

Co-Curated by Kimberly Ritchie, Shandra  
McLane, and Cynthia Robinson

This exhibition will explore climate change  
through the lens of scientific information  
and artistic imagery using contemporary art  
installations and scientific data concerning  
oceans of the world, waterways, atmosphere,  
and drought. Artists and scientists featured  
in this exhibit are Kimberly Ritchie, Shandra  
McLane, Fawn Atencio, Martin and Erik  
Demaine, and Eric Kelsey and his research  
team.


## SUMMER CAMPS: THE WHITE MOUNTAIN ROOTS OF AN ICONIC AMERICAN EXPERIENCE

**May 1–September 15, 2017**

Opening Reception,  
Wednesday, May 3, 5–7pm

Co-Curated by Paul Hutchinson, Marcia  
Schmidt Blaine, and Cynthia Robinson  
Growing out of transcendentalist ideals and  
White Mountain tourists’ love of the region,  
the American summer camp movement  
began on the shores of Squam Lake. This  
exhibition will not only use summer camp  
memorabilia and images, but will also  
include a participatory “Camp Stories” digital  
experience. The tales collected through  
“Camp Stories” will be part of the exhibit and  
a lasting legacy for future researchers.

## EVENTS IN THE SILVER CENTER FOR THE ARTS

- **Curtain times vary**, so check your tickets. Latecomers will be seated at the discretion of house management. Some productions may not allow any late seating at all. Due to the intimate seating arrangement of the Studio Theatre, there is no late seating in this venue.
- **All patrons** regardless of age must have a ticket. In consideration of other patrons, please be certain that the event is suitable for and of interest to your child.
- **Accommodations** can be made for patrons with special needs through the box office. The Silver Center is fully accessible, and large-print programs and assisted listening devices for selected events are available by advance request.  

- **No recording.** The unauthorized use of any audio or video recording devices is strictly prohibited and violates copyright protection. We will enforce this policy.
- **Cell phones:** Please remember to silence and put them away as you enter the theatre. Taking pictures is in violation of the above policy and texting is annoying to the performers and those around you.
- **Fine print:** All sales are final; there are no refunds or exchanges. If the artist performs, we are obligated to pay their fee and therefore cannot issue refunds. We can only issue refunds in the event of cancellation by the artist. All programs are subject to change without notice. There is a \$2 per order handling fee for all orders except those purchased in person at the box office window.

## DIRECTIONS

The **Silver Center for the Arts** is on the campus of Plymouth State University.

Use Exit 25 off I-93; and follow the signs. For GPS users, enter 114 Main Street.

For the **Hanaway Rink** at the **PSU Ice Arena** (where the Ice/Dance will take place), take Exit 25, and follow the signs to the PSU Welcome Center/Ice Arena on Holderness Road.

## IN PERSON

At the Silver Center Box Office located on the Plymouth State University campus.

11 a.m.–4 p.m. year round; closed major holidays and some school vacation days.

Check our website or call if unsure.

## BY PHONE

Call (603) 535-ARTS (2787) or (800) 779-3869. Visa, MasterCard, Discover, and American Express accepted. A \$2 per order handling fee will apply.

## ONLINE


Visit [silver.plymouth.edu](http://silver.plymouth.edu). Tickets for most events are available online through our secure site with Tickets.com. Visa, MasterCard, Discover, and American Express accepted. Convenience fees will apply. All sales are final; no exchanges or refunds unless a performance is cancelled.



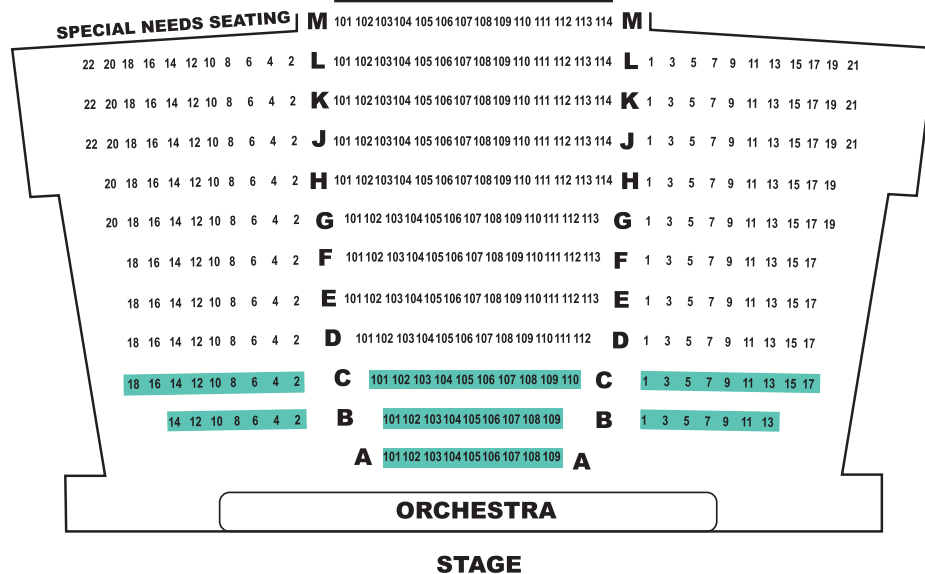
- **Discounts** are available for most events to seniors (62+), youths (18–), groups of 15 or more, full-time, matriculated PSU students (one per PSU ID, which must be presented at the box office window), and PSU faculty and staff (two per PSU ID at the box office only, must present ID). Call or inquire at the box office for more information.
- **Seating** is assigned as “best seats available” when we receive your order. Patrons wishing to sit together must order tickets at the same time.
- **Gift certificates** are available at the Silver Center in any amount and make a great gift!

---

Stay up to date with all the events and get a behind-the-scenes look at the Silver Center in two ways:

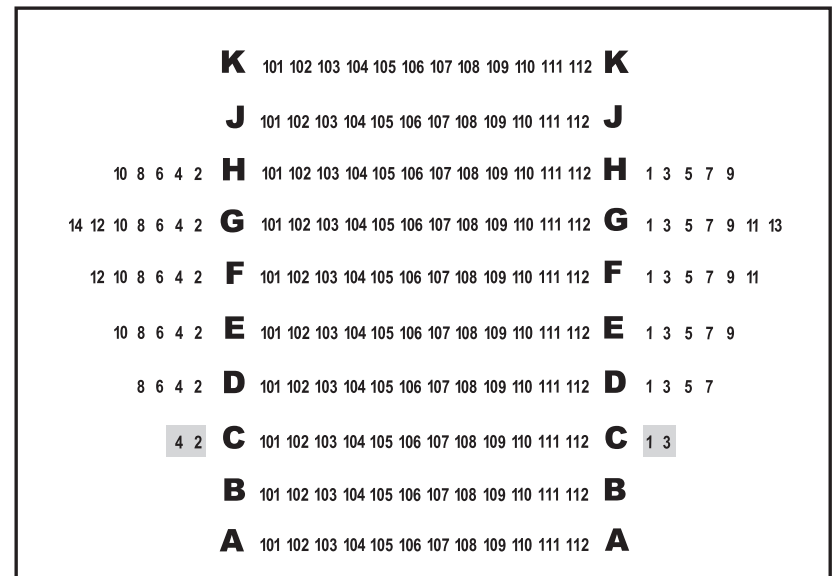
- LIKE us on Facebook 
- Sign up for **QUICKSILVER** and get e-mails delivered directly to your inbox.  
Access both from [silver.plymouth.edu](http://silver.plymouth.edu).

# seating



□ "A" seating    ■ "B" seating    ■ "C" seating

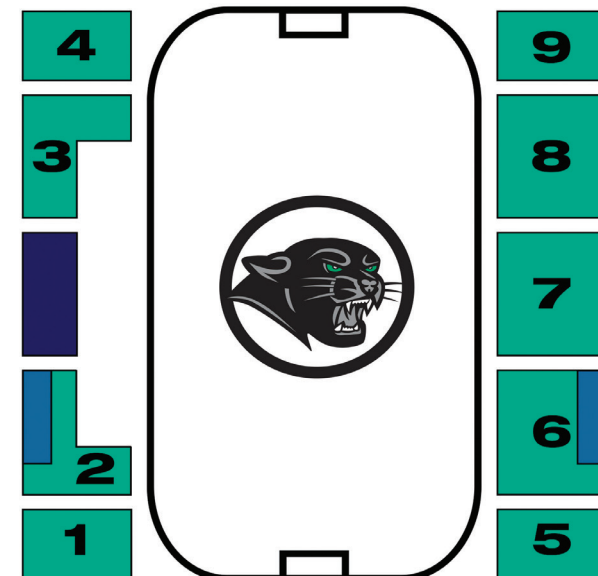
## Hanaway Theatre



■ SPECIAL NEEDS SEATING

STAGE

## Smith Recital Hall



Seating chart not drawn to scale

■ Special needs seating    ■ Media

## Hanaway Rink at PSU Ice Arena

Where the Ice/Dance event will take place

# SILVER

CENTER FOR THE ARTS  
PLYMOUTH STATE UNIVERSITY

SILVER CENTER FOR THE ARTS, MSC 36  
PLYMOUTH STATE UNIVERSITY  
17 HIGH STREET  
PLYMOUTH, NH 03264-1595

## 90 great events. 19 are free!

NON-PROFIT ORG.  
US POSTAGE  
**PAID**

### THANKS TO OUR SPONSORS:



**nhpr**



**Bank of  
New Hampshire**  
*New Hampshire's local bank*

DICK AND BETTY HANAWAY  
ENDOWMENT FOR THE  
PERFORMING ARTS

